

## TECHNICAL SPECIFICATIONS



### Engine

Engine Model	WEICHAI WP7H
Number of Cylinders	6
Max. Torque/Speed	1000N·m/1300-1500rpm
Displacement	6.8L



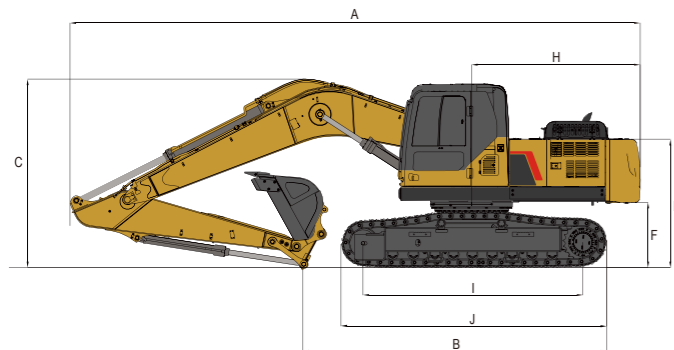
### Main Performance

Bucket Digging Force	83/83kN
Arm Digging Force	56/50kN
Max. Traction Force	193kN
Max. Walking Speed	5.1km/h
Min. Walking Speed	3.3km/h
Rotary Speed	10r/min
Gradeability	35°
Ground Pressure	41.4/44.3kPa



### Working Range

Max. Digging Height	13960/15800mm
Max. Dumping Height	11700/13500mm
Max. Digging Depth	11640/14200mm
Max. Vertical Digging Depth	7500/9250mm
Max. Digging Radius	15430/18100mm
Max. Ground Digging Radius	15300/18000mm
Min. Turning Radius	3920/5040mm



### Hydraulic system

Max. Main Pump Flow	2X223L/min
Main Safety Valve Pressure	34.3/37.3MPa



### Oil Capacity

Fuel Tank	385L
Hydraulic Tank	220L
Engine Oil	20L



### Other Specifications

Boom Length	8800/10210mm
Arm Length	6376/7510mm
Track Section Number (each side)	49
Track Roller Number	9



### Dimensions

Shipping Length	12750/14120mm
Shipping Ground Length	4680/4960mm
Boom Height	3080/3200mm
Shipping Width	2980mm
Cab Height	3050mm
Ground Clearance of Counter Weight	1090mm
Min. Ground Clearance	461mm
Tail Turning Radius	2925mm
Length to Center of Rollers	3640mm
Track Length	4465mm
Track Gauge	2380mm
Track Shoe Width	800mm
Hood Height	2150mm
Rotary Platform Width	2700mm



### WEICHAI LOVOL CONSTRUCTION MACHINERY GROUP CO., LTD.

Address: No. 75, Huanghe East Road, Huangdao District, Qingdao City, Shandong Province, China.

Website: en.lovol.com Facebook: Cons Lovol TEL: +86-532-86907190

E-mail: lovol\_overseas@global.lovol.com

As manufacturer, WEICHAI LOVOL has right to constantly upgrade and improve our products without informing to customers. The pictures in literatures are for reference only, the detailed specifications are subject to real products.

Rated Power **160kW/2000rpm**

Operating Weight **25900kg**

Bucket Capacity **0.4 m³**

# FR245E<sub>2</sub>

EXCAVATOR