

TECHNICAL SPECIFICATIONS



Engine

Engine Model	WEICHAI WP10H
Number of Cylinders	6
Max. Torque/Speed	1474N·m/1500rpm
Displacement	9.5L



Hydraulic system

Max. Main Pump Flow	2*347L/min
Main Safety Valve Pressure	35MPa



Main Performance

Bucket Digging Force	283.2kN
Arm Digging Force	261.2kN
Max. Traction Force	334.6kN
Max. Walking Speed	5.5km/h
Min. Walking Speed	3.2km/h
Rotary Speed	7.9r/min
Gradeability	>35°
Ground Pressure	75kPa



Oil Capacity

Fuel Tank	690L
Hydraulic Tank	210L
Engine Oil	30L



LOVOL CONSTRUCTION MACHINERY GROUP CO., LTD.

Address: No. 75, Huanghe East Road, Huangdao District, Qingdao City, Shandong Province, China.
Website: en.lovol.com Alibaba: lovolconstruction.en.alibaba.com Facebook: Cons Lovol
E-mail: lovol_overseas@global.lovol.com TEL: +86-532-86907190

As manufacturer, LOVOL has right to constantly upgrade and improve our products without informing to customers.
The pictures in literatures are for reference only, the detailed specifications are subject to real products.



Rated Power 247kW/2000rpm
Operating Weight 42500kg
Bucket Capacity 2.2m³

FR420E2-HD
EXCAVATOR



RELIABILITY

Reliable Electrical System

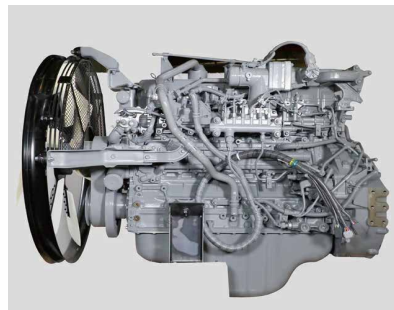
All the wiring harnesses adopt waterproof and dustproof connectors, which have high security level and high reliability. Shut-down protection is added to reduce the failure possibility for electrical elements when power was cut off.

Reinforced Working Device

Adopts high-strength rock bucket teeth which is special suitable for the tough applications, the boom and arm are reinforced to prolong the service life. Self-lubrication shaft sleeve is used to make every linkage works smoothly with high durability.

High strength abrasion resistant material

The bucket side material adopts HQ60 material and the bottom of the bucket adopt updated Q550D material, it makes the bucket more durable.



EFFICIENCY

Weichai Powerful Engine

Equipped with word famous brand Weichai WP10H engine, which can provide strong power when working with low fuel consumption, the fuel efficiency is improved dramatically.

Linde Hydraulic System

Equipped with Linde hydraulic system which has good cooperation between the main pump and main valve, the control performance is perfect, it has good working experience through fast and smooth operation.

Excellent Working Performance

The large torque rotary motor makes the swing operation more faster and smoothly, equipped with 2.2 cbm large buck, it has higher working efficiency and lower oil consumption compared with the same level machine.



SERVICEABILITY



Display Screen

Add trouble code diagnostic and maintenance monitor functions which are convenient for operator to find the failure and do the routine maintenance on time.

Engine Hood and Panels

The large engine hood enlarges maintenance space for operator to check and maintain the engine. The tool box is big with big opening angle which can put grease bucket and special tools easily. One key can open all locks of machine, it is very convenient for the operator.

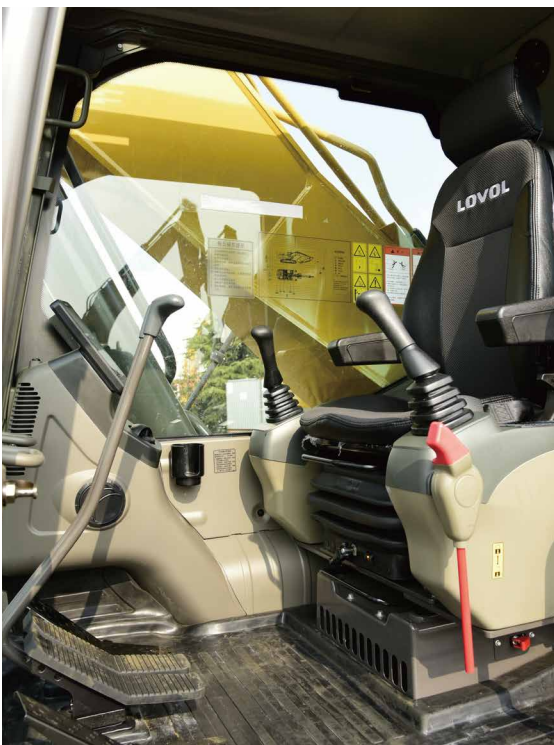
Filters and Maintenance Period

All the filters are fixed at ground level position, it is very convenient to do routine maintenance. The maintenance interval is also extended to save time and cost.

Extra Long Warranty Time

The engine and hydraulic system provide 5 years or 10000 hours long term warranty time.

COMFORT



Large Spacious Cab

Equipped with spacious cab which provides operator large space to operate machine. The premium suspension seat with armrests is very comfortable and it can reduce the working fatigue dramatically. Front windshield can be partially or fully retracted to the cab roof. Rearview camera is optional to get better rear vision in order to improve operation safety in jobsite.

Ergonomic Design

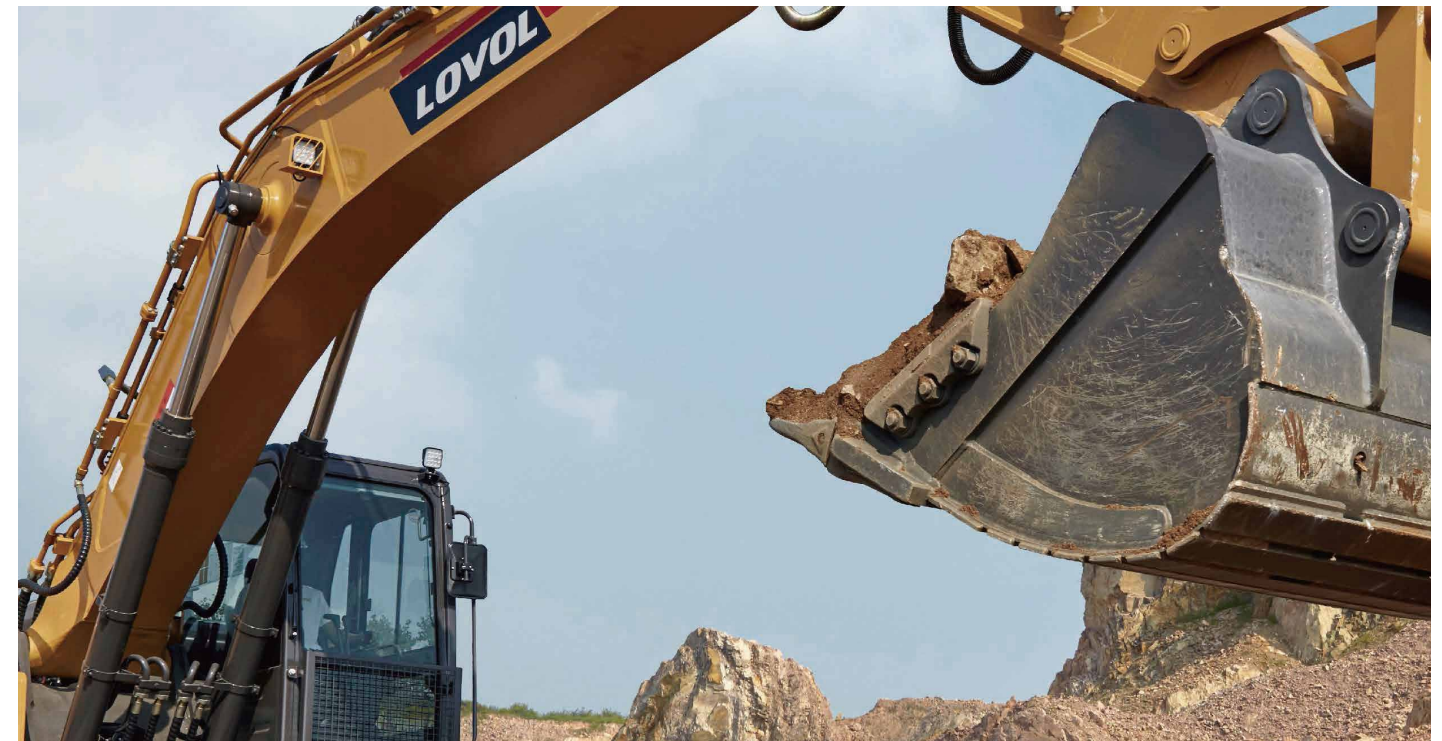
The proportional joystick delivers sensitivity, accuracy and smoothness in operation. This joystick is specially designed to meet different operating conditions. Intelligent control system is standard which could control diverse attachments such as bucket, hammer, scarifier and hydraulic scissors.

Low Noise and Low Vibration

In order to reduce work fatigue and improve productivity, the noise inside of cab has been controlled to the lowest level. The cab is attached to the frame with buffer that dampens vibrations and sound levels to enhance operator comfort.

INCREASE YOUR PRODUCTIVITY AND PROFIT WITH LOVOL ATTACHMENTS

You can easily expand the performance of your machine by utilizing any of the variety of LOVOL Attachments. Each LOVOL Attachments is designed to fit the weight and horsepower of LOVOL Excavator for improved performance, safety, and stability.



Quick Coupler



Hydraulic Shear



Hydraulic Hammer



Scarifier



Standard Bucket



STANDARD CONFIGURATION

Engine

Turbocharged, 6-cylinders, water-cooling, direct injection
Radiator with protective fence
Air Pre-filter
Air intake heater
Fan guard
Double filters, dry air filter
Engine oil pan with oil drain valve
Automatic idle speed system

Hydraulic System

Automatic hydraulic system (flow confluence system)
Multistage filtration system
Anti-sway valve
Boom and stick locking valve
Cylinder buffer device
Anti-slope turning device
Hydraulic hammer pipeline
Pilot buffer valve (rotary, stick, boom)

Electronic Control System

24V power battery
Monitor brightness adjustment
Maintenance tips
Safe stop & start function
Master switch
Engine start protection
Multilingual display
Cab ceiling light
Diagnostic interface
Emergency stop switch
Automatic diagnosis system
Automatic idle speed system
One-touch pressure enhancement
Anti-theft system

Cab

Ashtray
Cigarette lighter
Seat belt
Shade plate
Storage compartment
Emergency hammer
Air conditioner
Audio speaker
Shock absorber
Flexible aerial
Radio
Hydraulic safety locking rod
Sun proof safety glass
Floating seat

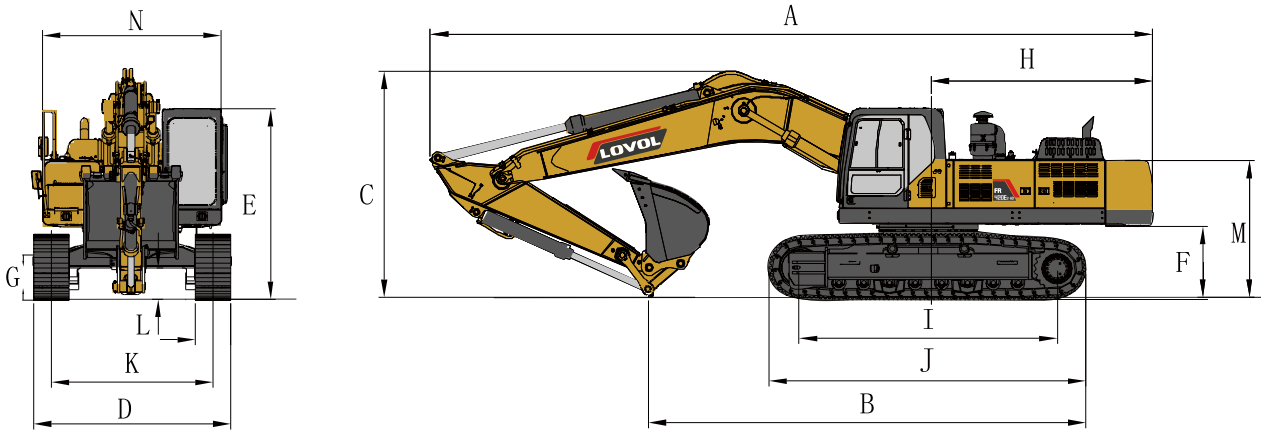
Swing Platform

Toolbox
Large pedal
Large handrail
Bottom guard plate
Anti-crash beams
Anti-skid plates
Passage with handrails
Cad protection device
Spare parts box

Chassis

Fixed chassis
600mm triple tooth track plate

TECHNICAL SPECIFICATIONS



Working Range

Max. Digging Height	1	10138mm
Max. Dumping Height	2	7034mm
Max. Digging Depth	3	6707mm
Max. Vertical Digging Depth	4	5323mm
Max. Digging Radius	5	11027mm
Max. Ground Digging Radius	6	10806mm
Min. Turning Radius	7	3700mm

Dimensions

Shipping Length	A	11495mm
Shipping Ground Length	B	6767mm
Boom Height	C	3628mm
Shipping Width	D	3340mm
Cab Height	E	3413mm
Ground Clearance of Counter Weight	F	1257mm
Min. Ground Clearance	G	550mm
Tail Turning Radius	H	3700mm
Wheel Tread	I	4320mm
Track Length	J	5390mm
Track Gauge	K	2740mm
Track Shoe Width	L	600mm
Hood Height	M	2373mm
Rotary Platform Width	N	3200mm

Other Specifications

Boom Length		6500mm
Arm Length		2900mm
Track Section Number (each side)		49
Track Roller Number		9

